

# FIELD SERVICES



HRL's Field Services program is a highly experienced and versatile team of professionals that assist in the design and field application of environmental regulations. They specialize in several areas including: Wildlife Protection, Waste Management, Remediation, and Stormwater. HRL's team is the premier provider of the leading method for industrial compliance with the Migratory Bird Treaty Act (MBTA) in the United States.

The installation of netting has proven to be the most efficient deterrent, as well as most cost-effective method for preventing harm or death to migratory birds as it relates to protecting birds over a large body of water. Approved by U.S. Fish and Wildlife Service (USFWS), HRL's design has been recognized as a best management practice (BMP) for the oil and gas and mining industries and is the most widely accepted prevention and protection choice for industrial applications. Having completed hundreds of screen installation projects, HRL has the experience and technical expertise to design, implement, and install all types of screening devices to prevent accidental death of

animals, no matter the type of development. In addition to installation of deterrent systems, HRL has maintenance crews which are available to perform routine field calls if an application should require maintenance.



**HRL**  
COMPLIANCE  
SOLUTIONS

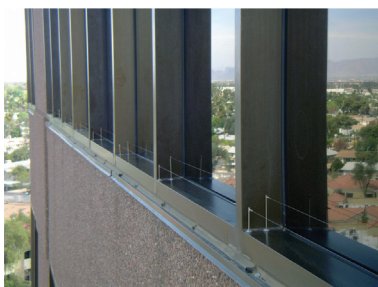
970.243.3271 • [www.hrlcomp.com](http://www.hrlcomp.com) • INNOVATIVE SOLUTIONS DELIVERED





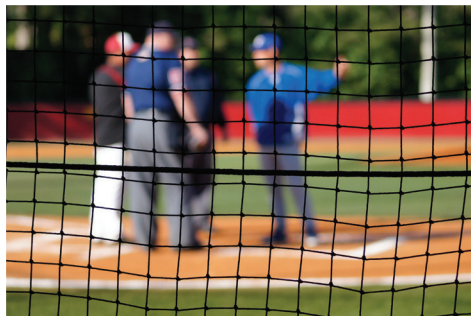
## Wildlife protection and MBTA compliance include the design, fabrication, and installation of:

- Netting structures over impoundments containing contaminated water or under bridges during construction and repair;
- Bird spikes on lights, parking structures and buildings to prevent unwanted roosting and nesting of birds and rodents;
- Screens on stacks and tanks to prevent accidental takes of birds and small animals.



## HRL also provides industrial design, fabrication, and installation of netting at:

- Landfills and disposal facilities to contain debris from leaving the facility;
- Golf course driving ranges and fairways to protect nearby structures and pedestrians;
- Parks and baseball facilities.



**HRL**  
COMPLIANCE  
SOLUTIONS

970.243.3271 • [www.hrlcomp.com](http://www.hrlcomp.com) • INNOVATIVE SOLUTIONS DELIVERED